

Shofu Robot FG Diamonds

Superior Quality, Economical Price



Shofu Robot FG Diamonds

Superior Quality,
Economical Price

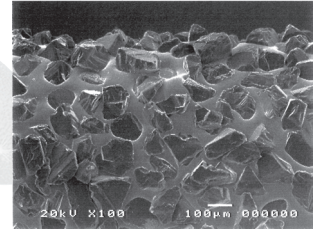
**SERVE
PATIENTS
INCREASE
PRODUCTION
GO HOME
ON TIME!**

Shofu is dedicated to manufacturing the highest quality products utilizing our innovative technologies to enhance minimally invasive cosmetic dentistry.

shofu.com
800.827.4638
customer-service@shofu.com

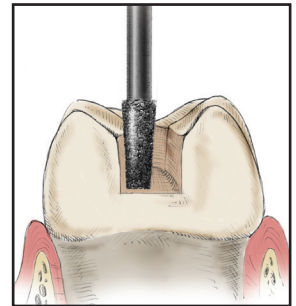
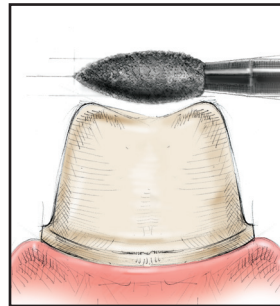
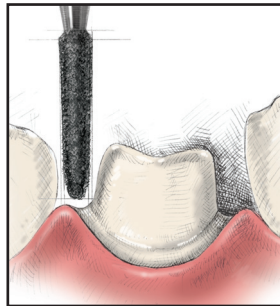
DURABLE DESIGN

Robot Diamonds are manufactured utilizing a robotic process that distributes precise amounts of diamond particles of the proper size with a proprietary multi-coating technique on a one-piece stainless-steel shank. This creates an incredibly durable surface and offers greater stability at higher speeds. Robot Diamonds are indicated for all cavity and crown preparations, as well as the reduction or modification of all dental materials.



EFFICIENT AND LONG-LASTING

Our multi-coating technique produces superior cutting efficiency with less clogging, allowing precise, smooth operation—for faster prep times and more comfort for the patient! A comprehensive study by the ADA proved that the cutting performance of Robot Diamonds exceeded all other brands tested.*



PROVEN QUALITY AND SUPERIOR VALUE

Robot Diamonds were rated #1 in an independent study for the overall performance.* They are available in a variety of grits, shapes, and sizes (including a minimally invasive series). Even better, Robot FG Diamonds are less expensive than other leading brands of multi-use diamonds.



CONFIDENCE

For more than 100 years, Shofu Dental's dedication to quality has made us one of the world's most respected dental products manufacturers. What can we do for you?

*Research study conducted by the ADA and published in the Professional Product Review, Vol. 1, Winter 2006.

SHOFU ROBOT FG DIAMONDS

SHOFU



shofu.com
800.827.4638
customer-service@shofu.com



DIAMONDS

SHAPE CATEGORY	Round End Tapered Cylinder									
SHAPE										
ISO#	223/018	223/019	223/018	223/016	198/021	198/021	223/023	223/023	198/023	198/023
LENGTH	9.0	9.0	9.0	9.0	9.0	9.0	9.0	11.5	9.0	9.0
GRIT	R	SC	C	F	R	SF	R	R	R	SF
PN (1 PK)	0835-1	835X-1	835C-1	835F-1	0836-1	836V-1	0837-1	0838-1	0839-1	839V-1

SHAPE CATEGORY	Flame									
SHAPE										
ISO#	249/014	249/016	249/015	249/013	249/012	243/009	249/017	249/016	243/012	249/023
LENGTH	7.5	7.5	7.5	7.5	7.5	4.0	7.5	7.5	6.0	9.0
GRIT	R	SC	C	F	SF	SF	R	F	SF	R
PN (1 PK)	0840-1	840X-1	840C-1	840F-1	840V-1	841V-1	0842-1	842F-1	843V-1	0844-1

SHAPE CATEGORY	S Type Inverted Cone					Corn				
SHAPE										
ISO#	032/013	032/018	032/021	019/010	019/015	019/017	039/033	039/034	031/035	031/035
LENGTH	1.5	2.0	2.3	2.2	3.6	3.5	5.0	5.0	5.7	5.7
GRIT	R	R	R	R	R	R	R	SC	R	SF
PN (1 PK)	0855-1	0856-1	0858-1	0859-1	0860-1	0861-1	0898-1	898X-1	0899-1	899V-1

SHAPE CATEGORY	Straight Cylinder					Round End Straight Cylinder			
SHAPE									
ISO#	107/010	109/013	110/015	110/016	110/018	289/016	289/015	130/016	130/014
LENGTH	4.0	4.5	7.0	7.0	7.0	8.0	8.0	8.0	8.0
GRIT	R	R	R	R	R	SC	C	R	F
PN (1 PK)	0800-1	0801-1	0803-1	0805-1	0807-1	845X-1	845C-1	0846-1	846F-1

SHAPE CATEGORY	Inverted Cone					Pear				
SHAPE										
ISO#	012/014	012/016	013/025	225/020	226/024	237/015	237/018	237/025	237/033	237/034
LENGTH	1.4	1.6	1.7	4.4	7.0	4.5	4.5	6.5	5.0	5.0
GRIT	R	R	R	R	R	R	R	R	R	SC
PN (1 PK)	0864-1	0865-1	0866-1	0868-1	0870-1	0878-1	0879-1	0891-1	0892-1	892X-1

SHAPE CATEGORY	Flat End Tapered Cylinder									
SHAPE										
ISO#	170/012	170/017	170/017	170/022	171/016	172/019	172/021	173/017	173/015	174/020
LENGTH	4.0	4.4	5.0	5.0	7.0	9.0	9.0	10.0	10.0	12.0
GRIT	R	R	R	R	R	C	R	R	F	R
PN (1 PK)	0810-1	0812-1	0813-1	0814-1	0816-1	817C-1	0818-1	0820-1	820F-1	0822-1

SHAPE CATEGORY	Wheel		Knife Edge Wheel		Round Edge Wheel			Egg		
SHAPE										
ISO#	042/044	041/052	304/028	304/050	068/034	068/046	068/047	068/046	277/029	277/029
LENGTH	1.4	0.8	0.8	1.2	1.3	1.8	1.9	1.8	4.9	4.9
GRIT	R	R	R	R	R	R	SC	C	R	SF
PN (1 PK)	0885-1	0886-1	0888-1	0890-1	0894-1	0895-1	895X-1	895C-1	0893-1	893V-1

SHAPE CATEGORY	Flat End Tapered Cylinder	Corner Round Tapered Cylinder								
SHAPE										
ISO#	173/022	196/013	544/018	544/018	544/021	544/021	545/018	545/018	553/019	553/019
LENGTH	10.0	5.0	4.0	4.0	5.0	5.0	7.0	7.0	10.0	10.0
GRIT	R	R	R	SF	R	SF	R	SF	R	SF
PN (1 PK)	0824-1	0830-1	0789-1	789V-1	0790-1	790V-1	0791-1	791V-1	0792-1	792V-1

SHAPE CATEGORY	Guide Groove Cutter		Bud							
SHAPE										
ISO#	522/026	552/036	243/017	243/014	257/022	243/022	243/023	243/022	243/020	243/019
LENGTH	3.6	4.0	3.0	3.4	3.5	5.0	5.0	5.0	5.0	5.0
GRIT	R	R	R	SF	R	R	SC	C	R	SF
PN (1 PK)	0896-1	0897-1	0880-1	880V-1	0881-1	0883-1	883X-1	883C-1	883F-1	883V-1

SHAPE CATEGORY	Corner Round Tapered Cylinder					Needle Tapered Cylinder				
SHAPE										
ISO#	553/023	553/023	544/027	544/027	544/031	544/031	164/014	165/013	165/012	166/016
LENGTH	10.0	10.0	3.5	3.5	3.5	3.5	6.0	8.0	8.0	10.0
GRIT	R	SF	R	SF	R	SF	F	R	F	R
PN (1 PK)	0793-1	793V-1	0825-1	825V-1	0826-1	826V-1	847F-1	0848-1	848F-1	0850-1

SHAPE CATEGORY	Round						
SHAPE							
ISO#	001/014	001/016	001/015	001/018	001/017	001/022	001/024
LENGTH	1.0	1.2	1.3	1.4	1.4	1.8	1.8
GRIT	R	R	SF	R	F	R	SC
PN (1 PK)	0872-1	0874-1	874V-1	0875-1	875F-1	0876-1	876X-1

SHAPE CATEGORY	Needle Tapered Cylinder				Round End Tapered Cylinder					
SHAPE										
ISO#	166/018	166/015	166/022	198/013	222/016	222/018	222/015	223/017	198/018	193/016
LENGTH	10.0	10.0	10.0	9.0	7.0	7.0	7.0	9.0	9.0	10.0
GRIT	SC	F	R	R	R	SC	F	R	SF	R
PN (1 PK)	850X-1	850F-1	0852-1	0831-1	0832-1	832X-1	832F-1	0833-1	833V-1	0834-1

SHAPE CATEGORY	Minimally Invasive Preparation					
SHAPE						
ISO#	001/009	001/011	001/013	237/008	237/010	237/012
LENGTH	0.7	0.9	1.1	2.0	2.0	2.0
GRIT	R	R	R	R	R	R
PN (1 PK)	0944-1	0945-1	0946-1	0947-1	0948-1	0949-1



Scan Here
Instructions for Use