

Beautiful II

Nano-Hybrid, Universal Composite with GIOMER Technology



Beautiful® II

Nano-Hybrid, Universal Composite with GIOMER Technology

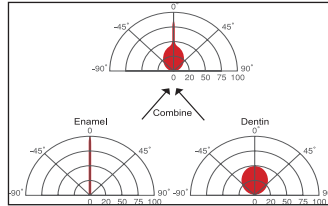
**SERVE PATIENTS
INCREASE PRODUCTION
GO HOME ON TIME!**

Shofu is dedicated to manufacturing the highest quality products utilizing our innovative technologies to enhance minimally invasive cosmetic dentistry.

shofu.com
800.827.4638
customer-service@shofu.com

AESTHETICS

As a nano-hybrid, **Beautiful II** offers superior strength and polishability. **Beautiful II's** unique filler structure combines the light transmission and diffusion properties of both dentin and enamel to blend well with surrounding dentition for picture perfect restorations.



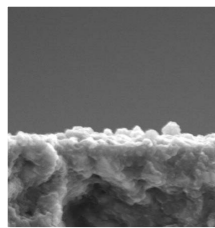
Light transmission and diffusion properties of Beautiful II



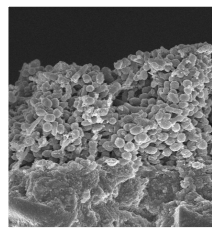
Sushil Koirala, BDS, AAAD

GREATLY REDUCES SECONDARY DECAY (GIOMER)

Shofu's exclusive GIOMER technology gives **Beautiful II** the ability to release and recharge fluoride and other beneficial ions for the life of the restoration. As a result of these bioactive properties, your patients receive healthful benefits unavailable in any competitor—anti-bacterial effect, acid neutralization, strengthen tooth structure and more! These benefits were validated by a clinical study at the University of Florida Dental School where no failures or decay were found in any of the restorations—even after eight years!*

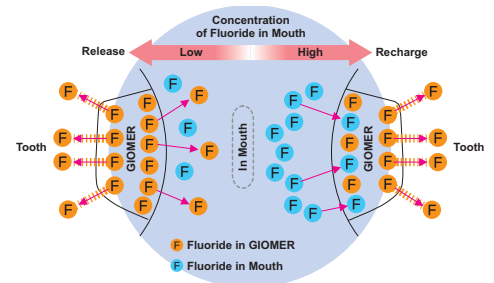


Beautiful II with GIOMER
Minimal Bacteria



Competitive Composite
Advanced Bacterial Colonization

Fluoride Release & Recharge from GIOMER

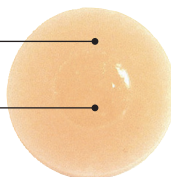


*1. Gordan V.V., et al. A clinical evaluation of a self-etching primer and a Giomer restorative material: Results at 8 years. JAM Dent. Assoc. 2007;138:621-627

PHYSICAL PROPERTIES

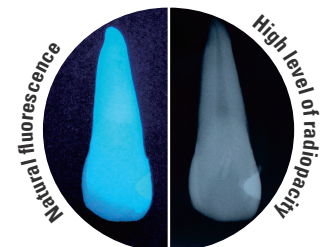
The physical properties of **Beautiful II** are among the best available. Nano-hybrid aesthetics make it ideal for anterior restorations while high filler load, wear resistance and low shrinkage make it strong enough for posterior restorations. All of this, combined with non-sticky handling and the predictability of absolute shade stability makes **Beautiful II** the perfect restorative material.

After Curing
Before Curing



Color Stable

- Filler Load: 83.3%
- Volumetric Shrinkage: <2.0%
- Radiopacity: 3.4 Al
- Wear Resistance 0.52%
- Natural Fluorescence.





shofu.com
800.827.4638
customer-service@shofu.com



PROVEN QUALITY

For more than a decade, **Beautiful II** has been used with confidence by dentists all over the world because of the combination of healthful benefits (GIOMER), aesthetics, non-sticky handling and superior physical properties. In addition, it has been evaluated by numerous research facilities and institutions; always receiving among the highest ratings.



CONFIDENCE

For almost 100 years, Shofu Dental's dedication to quality has made us one of the world's most respected dental products manufacturers. What can we do for you?

Beautiful II



BEAUTIFIL II

4.5g syringe

Shade

- A1 1401
- A2 1402
- A3 1403
- A3.5 1404
- A4 1405
- A20 1419
- A30 1420
- B1 1408
- B2 1409
- B3 1410
- C2 1412
- C3 1413
- Incisal 1415
- Bleach White 1416

0.25g Tips x 20 tips

Shade

- A1 1752
- A2 1753
- A3 1754
- A3.5 1755
- A4 1756
- A20 1770
- A30 1771
- B1 1759
- B2 1760
- C2 1763
- Incisal 1766
- Bleach White 1767

Beautiful II Cosmetic Kit (Item No. 1777)

- (3) 4.5g syringes in A2, A3, INC
- 2g Beautiful Opaquer in LO
- 2g Beautiful Flow F02 in A2
- Dura-White Stone
- Super-Snap Singles
- OneGloss Trial Set
- Paper pad

Beautiful II 6 Color Set (Item No. 1775)

- (6) 4.5g syringes in A2, A3, A3.5, B2, A30, INC
- Dura-White Stone
- Super-Snap Singles
- OneGloss Trial Set
- Paper pad

Beautiful II 6 Tips Color Set (Item No. 1776)

- (120) 0.25g tips in A2, A3, A3.5, B2, A30, INC
- Dura-White Stone
- Super-Snap Singles
- OneGloss Trial Set
- Paper pad

