

Beautiful II Gingiva

Nano-Hybrid, Gingival Composite with GIOMER Technology



Beautiful II Gingiva

Nano-Hybrid, Gingival Composite with GIOMER Technology

Shofu is dedicated to manufacturing the highest quality products utilizing our innovative technologies to enhance minimally invasive cosmetic dentistry.

shofu.com
800.827.4638
customer-service@shofu.com

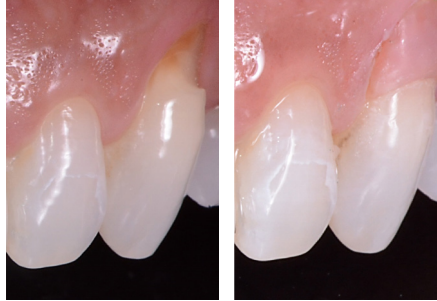


BIOACTIVE.
THE BETTER CHOICE.



AESTHETIC

Beautiful II Gingiva is a nano-hybrid universal composite that comes in five unique shades; allowing you to aesthetically restore patients of all ethnicities by improving gingival symmetry, repairing recession, and disguising exposed C&B margins and implant abutments.



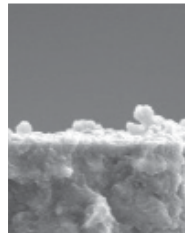
Rodrigo Ecalane, DDS



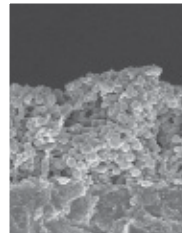
Frank Milnar, DDS

GREATLY REDUCES SECONDARY DECAY (GIOMER)

Shofu's GIOMER chemistry gives **Beautiful II Gingiva** long-term ion exchange for anti-bacterial and acid neutralizing effects which may help minimize problems caused by plaque and biofilm. A University of Florida Dental School clinical study showed no secondary caries after 8 years!*

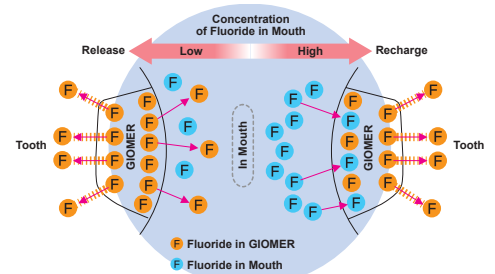


Beautiful II Gingiva with Giomer
Minimal Bacteria



Competitive Composite
Advanced Bacterial Colonization

Fluoride Release & Recharge from GIOMER



*1. Gordan V.V., et al. A clinical evaluation of a self-etching primer and a Giomer restorative material: Results at 8 years. JAM Dent. Assoc. 2007;138:621-627

BEAUTIFIL II Gingiva



Beautiful II Gingiva
2.5g syringe

- | Shade | Syringe |
|--------------|--------------------------------|
| G-Dark Pink | <input type="checkbox"/> Y2257 |
| G-Light Pink | <input type="checkbox"/> Y2256 |
| G-Brown | <input type="checkbox"/> Y2259 |
| G-Orange | <input type="checkbox"/> Y2260 |
| G-Violet | <input type="checkbox"/> Y2258 |



Beautiful II PINK Kit
(Item No. GMK1)

- 5 (2.5g) Beautiful II Gingiva syringe
- 1 (2g) Beautiful Flow Gingiva F02 syringe



Scan Here
Instructions
for use

	G-Dark Pink	G-Light Pink	G-Brown	G-Orange	G-Violet
2.5g					
PN	Y2257	Y2256	Y2259	Y2260	Y2258