

Beautiful Flow Plus X

Premium Nano Hybrid, Flowable Composite with GIOMER Technology



BEAUTIFIL® Flow Plus X

Premium Nano Hybrid,
Flowable Composite with
GIOMER Technology

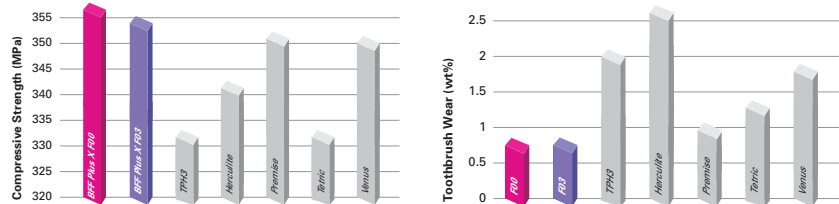
SERVE
PATIENTS
INCREASE
PRODUCTION
GO HOME
ON TIME!

Shofu is dedicated to manufacturing the highest quality products utilizing our innovative technologies to enhance minimally invasive cosmetic dentistry.

shofu.com
800.827.4638
customer-service@shofu.com

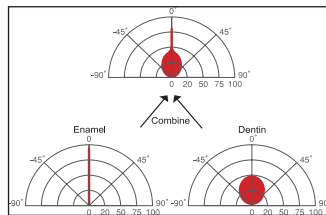
REVOLUTIONARY STRENGTH

Beautiful Flow Plus X was one of the first flowable composites ever awarded FDA approval for all restorative classes—including occlusal and cusp. Strong and durable, **Beautiful Flow Plus X** has better compressive strength and wear resistance than many leading brands of universal composite.



AESTHETICS AND POLISHABILITY

As a nano-hybrid, **Beautiful Flow Plus X** offers superior strength and aesthetics. With light transmission and diffusion properties of both dentin and enamel, **Beautiful Flow Plus X** blends well with surrounding dentition for picture perfect restorations. However, polishability is enhanced by significantly reducing the filler particle size.



Light transmission and diffusion properties of Beautiful Flow Plus X



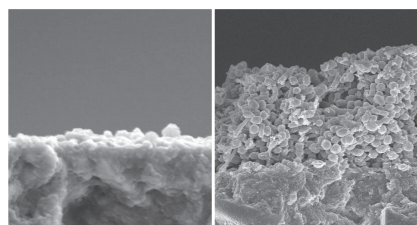
Dr. Kenichiro Sadamatsu, Japan



Once cured, simply wipe off the oxygen inhibited layer with an alcohol swab to reveal glossy surface.

GREATLY REDUCES SECONDARY DECAY (GIOMER)

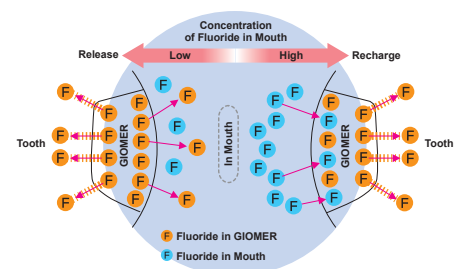
Shofu's exclusive GIOMER technology gives **Beautiful Flow Plus X** the ability to release and recharge fluoride and other beneficial ions for the life of the restoration. As a result of these bioactive properties, your patients receive healthful benefits unavailable in any competitor—anti-bacterial effect, acid neutralization, strengthen tooth structure and more! These benefits were validated by a clinical study at the University of Florida Dental School where no failures or decay were found in any of the restorations—even after eight years!*



Beautiful Flow Plus X with GIOMER
Minimal Bacteria

Competitive Composite
Advanced Bacterial Colonization

Fluoride Release & Recharge from GIOMER



*1. Gordan V.V., et al. A clinical evaluation of a self-etching primer and a Giomer restorative material: Results at 8 years. JAM Dent. Assoc. 2007;138:621-627

SHOFU

FUNCTIONAL

Available in two viscosities (Zero Flow & Low Flow), **Beautiful Flow Plus X** offers dentists treatment options to minimize chair time and patient discomfort. Both viscosities have excellent radiopacity, natural fluorescence and high flexural strength. All of this, combined with precise handling and the predictability of absolute shade stability makes **Beautiful Flow Plus X** the perfect restorative material.

shofu.com
800.827.4638
customer-service@shofu.com

Color Stable

After Curing
Before Curing

360° Rotary Finger Grip

**ZERO FLOW
BEAUTIFIL Flow Plus F00
Perfect for Class V!**

**LOW FLOW
BEAUTIFIL Flow Plus F03
Great as a base/liner!**

Natural fluorescence

High level of radiopacity

CONFIDENCE

For almost 100 years, Shofu Dental's dedication to quality has made us one of the world's most respected dental products manufacturers. What can we do for you?



BEAUTIFIL Flow Plus X



**BEAUTIFIL Flow Plus X F00
(Zero Flow) 2.2g syringe**

Shade	Syringe
A0.5	<input type="checkbox"/> YN2300
A1	<input type="checkbox"/> YN2301
A2	<input type="checkbox"/> YN2302
A3	<input type="checkbox"/> YN2303
A3.5	<input type="checkbox"/> YN2304
A4	<input type="checkbox"/> YN2305
B1	<input type="checkbox"/> YN2306
B2	<input type="checkbox"/> YN2307
C2	<input type="checkbox"/> YN2308
D2	<input type="checkbox"/> YN2309
A0.50	<input type="checkbox"/> YN2310
A10	<input type="checkbox"/> YN2311
A20	<input type="checkbox"/> YN2312
Incisal	<input type="checkbox"/> YN2314
Bleach White	<input type="checkbox"/> YN2315

**BEAUTIFIL Flow Plus X F00
(Zero Flow) 0.21g tips**

Shade	Tips
A0.5	<input type="checkbox"/> Y2400
A1	<input type="checkbox"/> Y2401
A2	<input type="checkbox"/> Y2402
A3	<input type="checkbox"/> Y2403
A3.5	<input type="checkbox"/> Y2404
A4	<input type="checkbox"/> Y2405
B1	<input type="checkbox"/> Y2406
B2	<input type="checkbox"/> Y2407
C2	<input type="checkbox"/> Y2408
D2	<input type="checkbox"/> Y2409
A0.50	<input type="checkbox"/> Y2410
A10	<input type="checkbox"/> Y2411
A20	<input type="checkbox"/> Y2412
Incisal	<input type="checkbox"/> Y2414
Bleach White	<input type="checkbox"/> Y2415

**BEAUTIFIL Flow Plus X F03
(Low Flow) 2.2g syringe**

Shade	Syringe
A0.5	<input type="checkbox"/> YN2320
A1	<input type="checkbox"/> YN2321
A2	<input type="checkbox"/> YN2322
A3	<input type="checkbox"/> YN2323
A3.5	<input type="checkbox"/> YN2324
A4	<input type="checkbox"/> YN2325
B1	<input type="checkbox"/> YN2326
B2	<input type="checkbox"/> YN2327
C2	<input type="checkbox"/> YN2328
D2	<input type="checkbox"/> YN2329
A20	<input type="checkbox"/> YN2332
A30	<input type="checkbox"/> YN2333
Incisal	<input type="checkbox"/> YN2334
Bleach White	<input type="checkbox"/> YN2335
Milky White	<input type="checkbox"/> YN2336
Cervical	<input type="checkbox"/> YN2337

**BEAUTIFIL Flow Plus X F03
(Low Flow) 0.21g tips**

Shade	Tips
A0.5	<input type="checkbox"/> Y2420
A1	<input type="checkbox"/> Y2421
A2	<input type="checkbox"/> Y2422
A3	<input type="checkbox"/> Y2423
A3.5	<input type="checkbox"/> Y2424
A4	<input type="checkbox"/> Y2425
B1	<input type="checkbox"/> Y2426
B2	<input type="checkbox"/> Y2427
C2	<input type="checkbox"/> Y2428
D2	<input type="checkbox"/> Y2429
A20	<input type="checkbox"/> Y2432
A30	<input type="checkbox"/> Y2433
Incisal	<input type="checkbox"/> Y2434
Bleach White	<input type="checkbox"/> Y2435
Milky White	<input type="checkbox"/> Y2436
Cervical	<input type="checkbox"/> Y2450

