

BeutiLink SA

Self-Adhesive Resin Cement Specifically for Zirconia Restorations with Bioactive Giomer Technology



BeutiLink SA

Self-Adhesive Resin Cement Specifically for Zirconia Restorations with Bioactive Giomer Technology

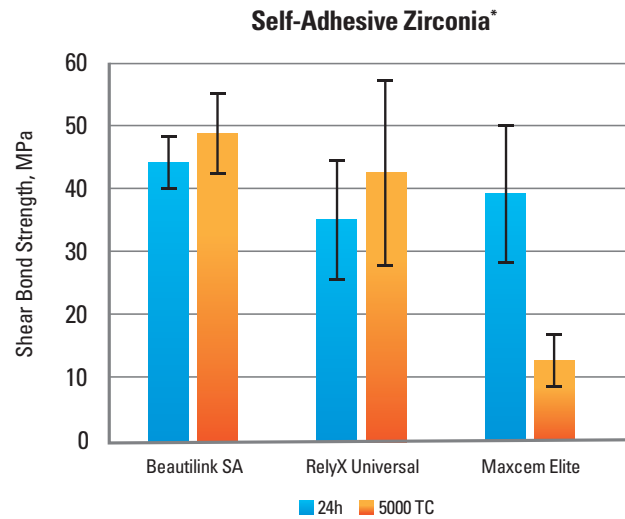
SERVE PATIENTS
INCREASE PRODUCTION
GO HOME ON TIME!

Shofu is dedicated to manufacturing the highest quality products utilizing our innovative technologies to enhance minimally invasive cosmetic dentistry.

shofu.com
800.827.4638
customer-service@shofu.com

SPECIFICALLY DESIGNED FOR ZIRCONIA RESTORATIONS!

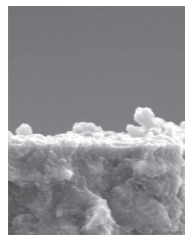
BeutiLink SA is a self-adhesive, dual-cured resin cement specifically designed for zirconia restorations. Zirconia has become the standard material for dental crowns, with 98% of respondents in a JADA study using it for their posterior crowns.¹ BeutiLink SA is formulated exclusively to ensure superior retention and marginal integrity, providing a strong bond for zirconia restorations. The already high bond strength can be further enhanced by using BeutiBond Xtreme or another primer of your choice.



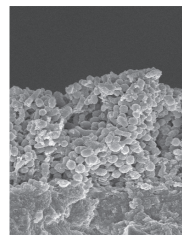
*2024 Dental Advisor Laboratory Evaluation

GREATLY REDUCES CROWN FAILURE (GIOMER)

With secondary decay being the most common cause of crown failure, Shofu's exclusive bioactive Giomer Technology gives BeutiLink SA the ability to release and recharge fluoride and other beneficial ions for the life of the restoration.^{2,3} **As a result of these bioactive properties, your patients receive healthful benefits unavailable in many competitors – anti-bacterial and acid neutralization effects, which will reduce caries-causing bacteria present in the preparation or infiltrating the margins.** These bioactive benefits were validated by a clinical study at the University of Florida Dental School, where no failures or decay were found in any of the restorations — *even after eight years!*³

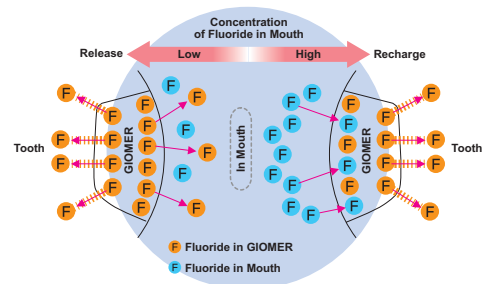


Minimal Bacteria (Asahi University)



Advanced Bacterial Colonization

Fluoride Release & Recharge from GIOMER

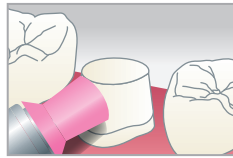


1. Lawson NC, Frazier KB, Bedran-Russo AK, Khajotia SS, Park J, Urquhart O. Zirconia restorations. 2021;152(1):80-81.e2. doi:https://doi.org/10.1016/j.adaj.2020.10.012
2. Walton, JN et al. A Survey of Crown and Fixed Partial Denture Failures, J Prosthet Dent. 1986 Oct;56(4):416-21
3. Gordan V.V., et al. A clinical evaluation of a self-etching primer and a Giomer restorative material: Results at 8 years. JAM Dent. Assoc. 2007;138:621-627

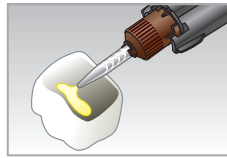


FAST AND EASY TO USE

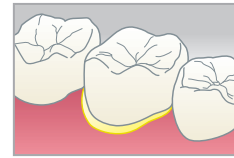
BeutiLink SA has an ideal viscosity for easy handling. The mixing tips ensure perfect paste delivery, and clean-up is quick and easy.



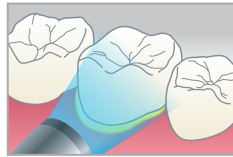
One: Prepare tooth.



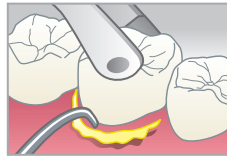
Two: Place BeutiLink SA.



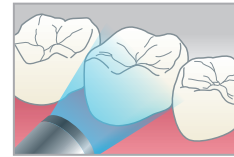
Three: Place zirconia restoration.



Four: Light cure for 1-2 seconds.[†]



Five: Remove excess cement.



Six: Light cure each surface.^{**}
LED: 10 seconds. Halogen: 20 seconds. Polish margin.

Working Time

2 minutes at start of mixing

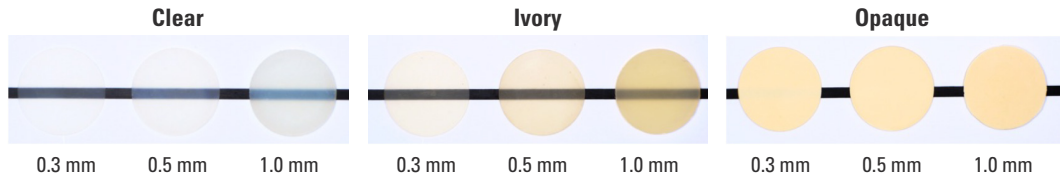
Setting Time

3 minutes at start of mixing

[†]Opaque: Leave for 2-3 min allowing self-curing and then remove excess cement. ^{**}Opaque: Wait for 5 min after light curing to allow chemical cure.

SHADE SELECTION

BeutiLink SA is available in three shades: Clear and Ivory are highly translucent, while the Opaque shade is excellent for masking stains and darker preps. Additionally, your restorations will maintain their aesthetics due to the remarkable color stability offered by BeutiLink SA.



shofu.com
800.827.4638
customer-service@shofu.com



BeutiLink SA

Use BeutiBond Xtreme as a Primer!



**BeutiBond Xtreme
Bottle (5mL)**
 Y2449

**BeutiBond Xtreme
Unit Dose Set**
(50) 0.1mL unit doses,
50 microbrushes
 Y2702



Scan Here
Instructions
for Use



BeutiLink SA 1 Syringe

(1) 5mL (8.6g), 10 mixer tips

Part Number	Shade
<input type="checkbox"/> C0203	Clear
<input type="checkbox"/> C0204	Ivory
<input type="checkbox"/> C0205	Opaque



BeutiLink SA 2 Syringes

(2) 5mL (8.6g), 20 mixer tips

Part Number	Shade
<input type="checkbox"/> C0212	Clear
<input type="checkbox"/> C0213	Ivory
<input type="checkbox"/> C0214	Opaque



Scan Here
Instructions
for Use